

## INSPECTION REPORT

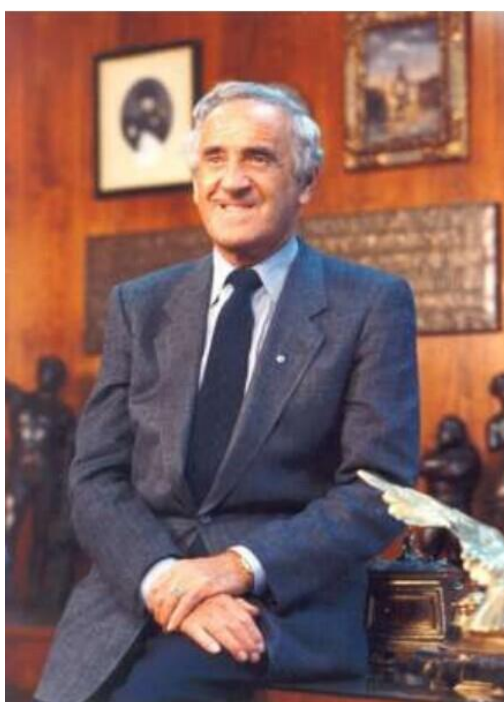
检验报告

Tribute to Ben Weider, the Founder of the modern body building  
& fitness sports

现代健美健身运动的创始人--本韦德

The loving mentor and life-long friend

爱的导师与终身的朋友



2<sup>nd</sup> BEN WEIDER Diamond Cup

第二届本韦德钻石杯

Bodybuilding, Classic Bodybuilding, Men's Fitness & Women's Fitness,

Physique, Body Fitness, Bikini,

健美, 古典健美, 男子女子健身, 健体、形体健身、比基尼

Men, Women, Juniors, Seniors, & Masters

男子、女子、青年、成年、元老

Lian Yun Gang, 21, 22, & 23 October 2014

2014年10月21, 22, 23日, 连云港

## **WELCOME TO LianYunGang:** (欢迎来到连云港)



连云港市位于我国万里海疆中部，江苏省东北部，是新亚欧大陆桥头堡和国家首批沿海开放城市。连云港市东与日韩隔海相望，西依大陆桥经济带，南连长三角经济圈，北接山东半岛城市群，处在沿海经济带和陇海经济带的战略结合部，是江苏沿海开发、长三角一体化、东中西区域合作示范区、创新型试点城市四大国家战略叠加聚焦城市。

Located in the middle part of China's coastline and in northeast Jiangsu Province, Lianyungang is known as the eastern starting point of the New Eurasia Land Bridge and is one of China's first coastal cities opened to the outside world. Facing Japan and South Korea

across the sea in the east and connecting the Lang Bridge economic belt in the west, linking the Yangtze River Delta economic circle in the south and Shangdong Peninsula city clusters in north, Lianyungang is the strategic meeting area of China's coastal economic belt and the Longhai economic belt, It has been integrated with four national strategies, including Coastal Jiangsu Development, the Integration of the Yangtze River Delta Region, the National Demonstration Area for the Cooperation among China's Eastern, Central and Western Regions, as well as the National Innovation-oriented Pilot City.

**About LianYunGang:** (关于连云港)



连云港地处黄海之滨，山海岛港相得益彰，旅游资源丰富，海洋，森林，湿地三大生态系统俱全，市区年空气质量优良率保

持在 90% 以上，是中国人居环境最好的城市之一，既是休闲度假的旅游胜地，也是生态清新的宜居家园。



Located by the Yellow Sea, Lianyungang enjoys mountains, sea, islands and a major port. It is rich in tourism resources, Lianyungang has complete ecological systems including ocean, forest and wetland ecosystems. Annual air quality excellent rating is over 90%, Lianyungang is one of China's cities with the best habitat environment. It is a tourist destination for leisure and recreation, as well as a comfortable habitat with excellent eco-environment.

## **COMPREHENSIVE TRANSPORTATION NETWORK**

## 综合交通



连云港港口通过陇海兰新铁路西连中西部地区以至中亚，是新亚欧大陆桥沿线地区最便捷的出海口、江苏沿海港口群核心、我国 12 个区域性主枢纽港和长三角港口群三大主体港之一。



Linked to Central and Western China and Central Asia through the Longhai-Lanxin Railway, Lianyungang Port is known as the most convenient seaport for regions along the New Eurasia Lang

Bridge, the core of Jiangsu's seaports, one of China's 12 regional hub ports and one of the three major ports in the Yangtze River Delta Region.

## TOURISM 旅游观光



连云港市共有 A 级景区 35 家，其中花果山景区、连岛海滨旅游度假区、渔湾风景区、孔望山风景区、东海国际水晶珠宝城、抗日山风景区、大伊山风景区、羽泉风景区为 4A 级景区。



There are 35 Grade A scenic areas in Lianyungang. 4A grade scenic areas include Huaguoshan Mountain Scenic Area, Liandao Island Seaside Resort, Yuwan Scenic Area, Kongwangshan



Mountain Scenic Area, Donghai International Crystal Jewelry City, Kangrisha Mountain Scenic Area, Dayishan Mountain Scenic Area and Yuquan Scenic Area.

## LOCAL DELICACIES 特色美食



悠久的历史传承、深厚的人文底蕴和丰富的物产资源，造就

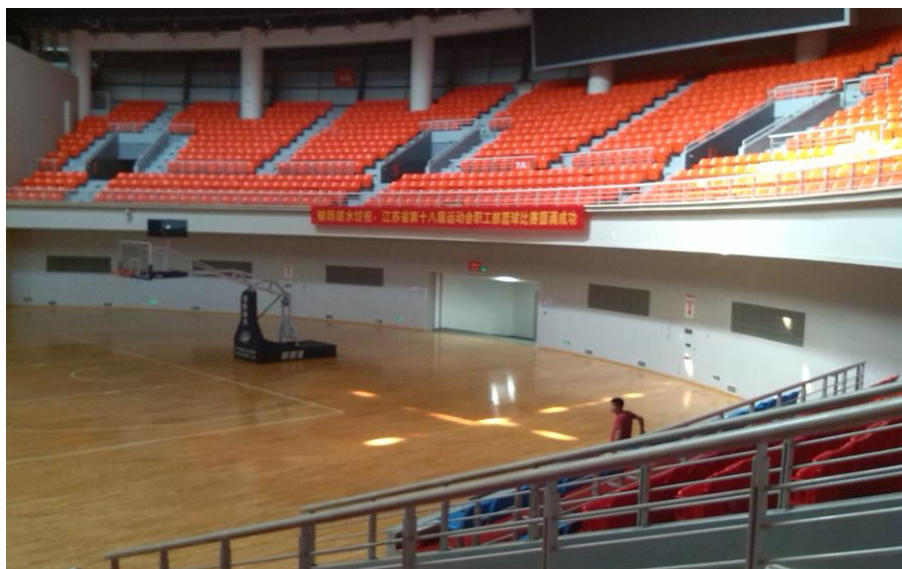
了连云港独特的饮食文化，形成了以海鲜为主，淮扬、川、鲁菜系相辅，鲜咸适中、兼收并蓄的独特地方风味，涌现了一批餐饮名店、名厨、名菜。

With a long history, profound cultural background and rich resources, Lianyungang has formed its unique cooking culture, It focuses on seafood, while also includes Huaiyang cuisine, Sichuan cuisine and Shandong cuisine. It features a moderate taste of freshness and saltiness, and integrates the strong points of other cuisine. There are a large number of prestigious restaurants, renowned chefs and famous dishes.

**VENUE SITE:**体育馆







39.8 万平方米，总建筑面积 42060 平方米，建筑高度为 46 米，占地面积 39.8 万平方米。该中心是集举办体育赛事、健身、娱乐休闲于一体的现代化体育场馆。目前一场三馆已全面建成投入使用。

体育中心建设内容包括：

1、体育场，建筑面积为 42060 m<sup>2</sup>，建筑高度为 46 米，能容纳 30000 名观众，能承办国家级田径、足球比赛。

2、游泳馆，建筑面积为 20627 m<sup>2</sup>，建筑高度 20 米，能容纳 3000 名观众，满足跳水游泳比赛、训练、健身和休闲等多功能需要。

3、体育馆，建筑面积为 16128 m<sup>2</sup>，建筑高度 27 米，共 2 层，满足比赛、训练、集会、演出等功能于一体，且规模较大、设施先进。内场总座位数 5243 席，内场比赛场地约 1036 m<sup>2</sup>。

4、全民健身馆，建筑面积约为 20288 m<sup>2</sup>，层高为 24 米，是集训练、娱乐、健身和休闲等多功能的综合训练馆。

Lianyungang sports Center is located in the west of HuaGuoShan Blvd, New XinHai District . It covers 39.84 hectares, and the general budget is about 1 billion RMB. The sports center is able to hold sports events and also as a modern sports center of fitness and entertainment functions.

The Sports Center includes:

1. Outdoor Stadium. The structure area of the stadium is 42060 m<sup>2</sup> , 46m height, can hold 30000 audience. And the stadium is able to hold national track and field or football contests.

2. Indoor Natatorium. The structure area of the natatorium is 20627 m<sup>2</sup>, 20m height, can hold 3000 audience. It can hold swimming and diving contests and it also opens to the public.

3. Indoor Gymnasium. The structure area of the gymnasium is 16128 m<sup>2</sup>, 27m height and 2 floors in total. It can hold sports contests, train athletes and also hold shows . There are 5243 seats in the gymnasium, and the area for contests is 1036m<sup>2</sup>.

4. Fitness Center. The structure area of the fitness center is 20288m<sup>2</sup>, 24m height. It' s a place for training and working out .

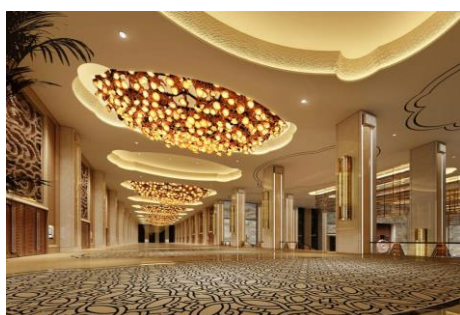
## 1. Contest's Info (比赛信息)

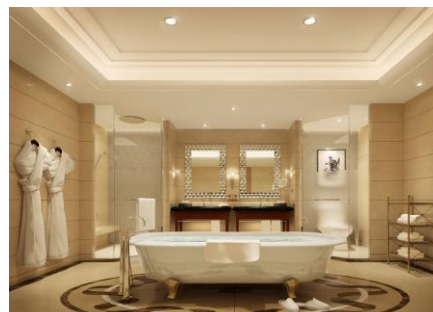
**Accommodation:** (住宿)

### RECOMMENDED IFBB HOTELS (推荐的酒店)



花果山国际酒店是江苏润科地产有限公司投资兴建，由中国最大的酒店连锁集团之一——南京金陵酒店管理有限公司全权管理的高端商务、会议型酒店。酒店拥有 546 间装饰精美典雅的客房与套房，彰显尊贵的贵宾楼和行政酒廊，四个独具特色的餐厅和近 12000 平方米的宴会与会议场地，可满足大型的会议与高档商务接待等不同需求。除此以外，酒店的休闲设施包括健身中心、网球场、乒乓球室、SPA 和室内游泳池等休闲设施。





Huaguoshan International Hotel is invested by Jiangsu Runke Estate CO.,Ltd. It's a high-end commercial conference hotel which is fully administrated by one of Chinese largest hotel chains-Nanjing Jinling Hotel Management Co.,Ltd, The hotel offers 546 gorgeous guest rooms and suits, deluxe grand hotel and executive lounge, four distinctive dining halls and about 12000 square meters area for banquet and meeting, which can meet the demand of your business trips and holidays.

**酒店联系方式**

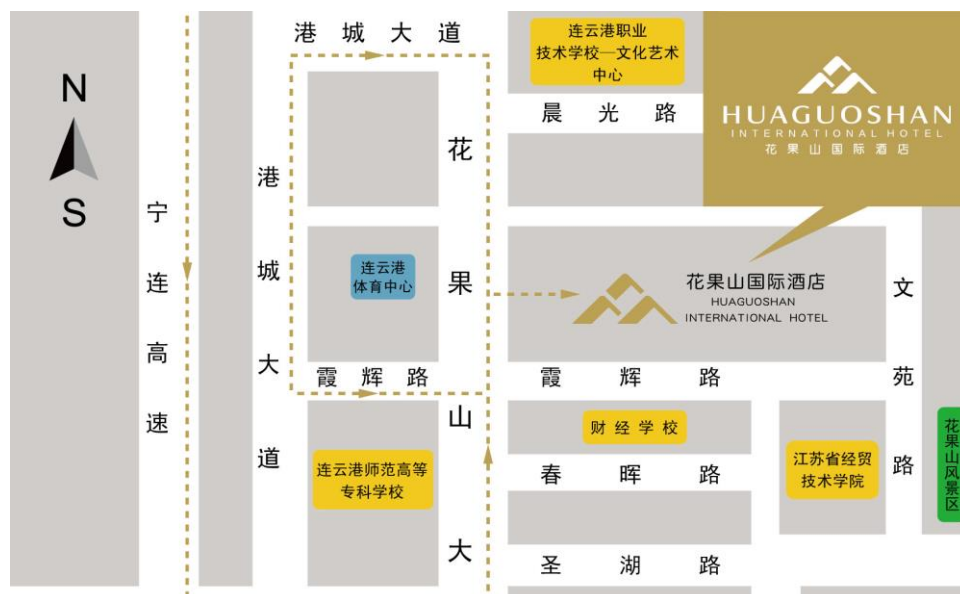
**地址：连云港市花果山大道 98 号**

**电话：0518—81089999**

**传真：0518—81083000**

**邮箱：lyg.hgs@jinlinghotels.com**

**网站地址：www.jinlinghotels.com**



## **2. IMPORTANT ARRIVAL AND CHECK-IN NOTICES**

(重要的到来和登记通知)

### **COMPETITOR NOTIFICATION** (参赛者通知(注意事项))

Once the entry form from the National Federation has been received and accepted, an official letter will be sent confirming your participation in the 2<sup>nd</sup> Ben Weider Diamond Cup 2014 IFBB International Bodybuilding, Fitness, Body-Fitness and Bikini Championships. Those athletes who have not met the established requirements, who missed the deadline for registration, will also be notified that they will be unable to participate in this competition. We strongly encourage you to register early and make the appropriate arrangements to compete in Lianyungang. Hotels will be booked up quickly as this is a very popular event.

一旦从国际联合会收到和接受报名表格,官方将发送公函以确认你参与 2014 年第二届本韦德钻石杯国际健身,健身,和比基尼锦标赛。运动员不符合既定要求,错过注册最后期限,也将被通知无法参加这次比赛,我们强烈建议您尽早注册,做出适当的安排以在连云港参加比赛。连云港的酒店很快将被预订一空,因为这是一个非常受欢迎的活动。

## **3. GENERAL INFORMATION** (一般信息)

**REGISTRATION AND REGISTRATION FEE** (注册及登记手续费)

Registration of athletes will only be considered if they are recommended or entered by the National Federation of the athlete and the entry form has been emailed directly to the IFBB General Secretary and IFBB Head Office in Madrid, The final decision to allow an athlete to compete in this event rests with the IFBB, Registration fee for athletes to enter this competition is 150 US Dollars which will be collected at the time of registration.

运动员处的报名表只有被国家运动员联合会发出或者是直接发送邮件给 IFBB 总部才会被考虑,最终决定让一名运动员参加这个活动取决于 IFBB。注册费用是每名运动员 150 美元, 请于登记注册时支付。

**POSING MUSIC/PASSPORTS/IFBB ID CARD** (出示音乐/护照/ IFBB 的身份证)

All competitors must provide their passports and music(on CD,with one track)at weigh-in, failing which the competitor will not be registered and will not be allowed to compete

所有参赛者都必须在赛前称重时提供护照和音乐 (CD), 不能完成者将不被接受注册, 不允许参加比赛。 .

**IMPORTANT NOTICE TO COMPETITORS** (运动员注意事项)

Each athlete participating in the championship will be provided with a

competitor wrist band at the weigh-in. This wrist band allows daily admission to the 2<sup>nd</sup> Ben Weider Diamond Cup 2014 and should not be removed.

赛前称重时每名运动员都会被提供一个运动员腕带以参加比赛。这个腕带是参加 2014 年第二届本韦德钻石杯的准入凭证，不可被移除。

### **IMPORTANT INFORMATION** (重要通知)

All the costs for travelling, hotel accommodations, transport from and to the airport and meals are the responsibilities of the national federations or individual athletes. Check with your national federation for more information. **List of very low-budget recommender hotels and contacts are provided on the Inspection Report.**

IFBB National Federations are informed that participation in to this championship is unlimited. Remember that all athletes will have to produce their IFBB International Card at the registration. Any athlete who has not yet purchase this IFBB International card will have to buy one at registration. IFBB Cards are 30 Euros per year and are mandatory from 2011.

所有旅费、酒店住宿、往返机场的交通及饮食是各国协会或个人的负担。请与你国家的协会确认更多的信息。**低成本的酒店和联系方式已经列在检查报告中了。**

国际健美健身联合会告知各国协会参加比赛是不受限制的。记住所有运动员在登记时必须出示 IFBB 的国际卡. 没有购买此国际卡的运动员请在登记时购买。IFBB 卡从 2011 年开始每年 30 欧元, 是必须要交的。

Categories open for the Ben Weider Diamond Cup are as follows:本次赛事设项如下:

## **MEN'S CATEGORIES**

### **MEN'S BODYBUILDING CLASSES**

- Up to & Incl. 60 kgs
- Up to & Incl. 65 kgs
- Up to & Incl. 70 kgs
- Up to & Incl. 75 kgs.
- Up to & Incl. 80 kgs.
- Up to & Incl. 85 kgs.
- Up to & Incl. 90 kgs.
- Over 90 kgs.

### **MEN'S CLASSIC BODYBUILDING**

1 OPEN CATEGORY - See table below

### **MEN'S FITNESS**

1 OPEN CATEGORY

### **JUNIOR MEN BODYBUILDING**

1 OPEN CATEGORY

### **MASTERS MEN OVER 40 YEARS**

1 OPEN CATEGORY



## WOMEN'S CATEGORIES

### WOMEN'S BODY FITNESS

UP TO 163CM

OVER 163CM

### WOMEN'S FITNESS

1 OPEN CATEGORY

### WOMEN'S BIKINI

UP TO 163CM

UP TO 169CM

OVER 169CM

### JUNIOR WOMEN BODY FITNESS >16 – 23 YRS

1 OPEN CATEGORY

### MASTERS WOMEN BODY FITNESS > 35 YRS

1 OPEN CATEGORY

### WOMEN'S PHYSIQUE

1 OPEN CATEGORY

### MAXIMUM WEIGHT LIMIT FOR THE HEIGHTS OF CLASSIC

#### BODYBUILDING:

A: HEIGHT Up to and incl 168cm---MAXIMUM WEIGHT Height minus 100

HEIGHT over 168cm Up to and incl 171cm--MAXIMUM WEIGHT Height minus 100+2kg

HEIGHT over 171cm Up to and incl 175cm--MAXIMUM WEIGHT Height minus 100+4kg

B: HEIGHT over 175cm Up to and incl 180cm--MAXIMUM WEIGHT Height minus 100+6kg

C:HEIGHT over180cm Up to and incl 190cm--MAXIMUM WEIGHT Height minus100+8kg

HEIGHT over190cm Up to and incl 198cm--MAXIMUM WEIGHT Height minus100+9kg

HEIGHT over 198cm-----MAXIMUM WEIGHT Height minus100+10kg

## Prizes

The Pro Card will only be issued when the total number of all athletes participating in the Men's Bodybuilding categories is no less than 60.

### **IMPORTANT NOTES:** (重要信息)

The organizing committee only accept no more than 80 competitors from Asia, Africa and Europe Countries(except China). (NOTE from Wanda: I don't understand this)

The Organizer of the event in LianYunGang, China will not accept any direct registration from athletes.

Entry Forms from athletes will only be considered if they are sent by the National Federation of the athlete and directly to IFBB Headquarters in Madrid and Wanda Tierney(see email addresses below).The final decision to allow an athlete to compete in this event rests with the IFBB.

Registration fee is 150 EUROS per athlete and will have to be paid

Please send Entry From no later than October 5<sup>th</sup>,2014 to(Preferably by email)

这次活动的组织者是连云港, 中国不会接受任何直接注册的运动员。

运动员处的报名表只有被国家运动员联合会发出或者是直接发给在马德里的IFBB总部(请参见下面的电子邮件地址)才会被考虑, 最终决定让哪名运动员参加这个活动取决于IFBB。

报名费用是每名运动员 150 美元, 请于 2014 年 10 月 5 日前报名(最好是通过电子邮件)

Wanda Tierney

Phone:

E-mail:

Please send a copy to:

Phone:

E-mail:

**SECRETARIAT:**会务组

The Organizing Committee will have a secretariat desk in the lobby of Hotel, October 21<sup>st</sup> at 11.00am, You can obtain information and assistance from Secretariat when required.

组委会秘书处将会有有一个桌子在酒店的大厅里, 10 月 21 日上午 11.00, 你可以从秘书处在需要时获得的信息和帮助。

**VISAS** 签证

All participants require a valid passport for entry to China. Please consult the China Embassy in your country to determine if you also need a visa.

所有参与者都需要一个有效的护照进入中国。 请向中国驻贵国大使馆咨询确定你是否需要签证。

**OFFICIAL LANGUAGE** 官方语言

The official language is Chinese ,but English is widely used. The staff of hotels, travel agencies and shops with who the visitors will be in contact will speak English.

官方语言是中文,但英语被广泛使用, 酒店的员工、旅行社和商店都会说英语。

**CURRENCY** 货币

The official currency in RMB

官方货币是人民币

**ELECTRIC CURRENT** 电流

220V

**PASSPORT/MUSIC** 护照及音乐

All competitors must provide their passports and music(on CD,with one

track)at weigh-in, failing which the competitor will not be registered and will not be allowed to compete.

所有参赛者都必须提供护照和音乐 (CD) 在赛前称重, 不能完成者将不会被注册, 不允许参加比赛。

### **PARADE OF NATIONS** 入场式

All delegates are reminded that the dress code for the Parade of Nations is the official IFBB uniform.

提醒各位代表国家的入场式队伍服装是官方的 IFBB 制服。

### **JUDGES** 裁判

All Judges will be nominated by the IFBB and the Chinese Federation.

所有裁判员由国际健美联合会以及中国健美协会选派。

### **NATIONAL ANTHEM** 国歌

All participating National Federations must bring the music of their national anthem on a CD with them. This must be on a separate CD to any posing music.

所有参赛国家协会必须将国歌以 CD 得形式带来, 而且一张 CD 只能有一支歌曲。

### **BACKSTAGE ACCESS/DRESSING ROOM ACCESS**

进入后台/进入更衣室

Access to the backstage area/dressing room shall be strictly limited to the

essential personnel only. Coaches and trainer who assist athletes in the dressing room must be of the same sex as the athlete they are assisting.

后台区域或更衣室应当严格限制进入。在更衣室帮助运动员的教练和助理教练必须是相同性别。

### **CAMERAS/VIDEOTAPES** 相机/录像带

Cameras and videotapes shall be strictly prohibited in the backstage area/dressing room except when used by dully recognized press personal and in any event, this device shall be strictly prohibited in the dressing room/backstage area.

摄像机和录像带严格禁止在后台区域或更衣室使用。除非是被认可的新闻媒体或个人。否则在任何情况下,该设备严格禁止在更衣室或后台区域使用。

### **PRESS ACCREDITATION** 媒体认证

Any press representatives that wish to obtain for this event have to register upon arrival and contact Organization Committee.

希望报道这一活动的媒体代表必须在到达时注册并联系组委会。

### **WEIGH-IN AND MEASUREMENT OF ATHLETES** 赛前称重

Weigh-in will take place in Huaguoshan International Hotel from 10.00-11:00 AM on 21<sup>st</sup> October. It is the responsibility of the chief

delegate or team leader to make sure that the athletes are on time. Any athletes who are late will not be accepted to participate.

赛前称重将于 21 号上午 10 点到 11 点在花果山国际酒店进行。请各领队务必确保运动员准时参加。迟到者不予参加比赛。

### **TANNING** 晒黑

THE IFBB HAS BANNED ALL TANS THAT CAN BE WIPED OFF. AN OFFICIAL WILL CHECK THE TAN OF ALL ATHLETES BACKSTAGE AND IF THE TAN COMES OFF BY SIMPLY WIPING, THE ATHLETE WILL BE TOLD TO REMOVE THE TAN BEFORE GOING ON STAGE.

IFBB 已经禁止所有可以被消除的黝黑肤色, 官员会检查所有运动员的肤色; 在后台, 由简单的擦拭能去除的话, 登台演出前将会被告知擦去黑色。

### **SECRETARIAT** 秘书处

You may obtain information and assistance from the IFBB Secretariat when required.

你可以在 IFBB 秘书处获取信息和帮助。

### **ENTRY FORMS** 入境表格

Please return the Preliminary Entry Form to the Organizing Committee as

soon as possible but no later than September 15<sup>th</sup>, 2014 and indicate your Federation's intentions to participate and the number of people from our country that will be attending the Championships.

You must return the Final Entry Form with the names of the people in your team NO LATER THAN October 5<sup>th</sup>, 2014. Please indicate the discipline, category, weight and height of your athletes in the Final Entry Form. Your co-operation is essential to ensuring your accommodations at the hotels and to assuring adequate transportation for your team.

请于 2014 年 9 月 15 日前填好预赛登记表, 以及参加比赛的人数。

必须于 2014 年 10 月 5 号告知参加比赛的小组人名, 请按照重量身高等分类, 您的配合是至关重要的, 以确保您整个队伍的食宿安排。

**Please send all correspondence to:**

请将所有的信件寄往

**CBBA China Bodybuilding Association** CBBA 中国健美协会

**TEL:**

**MOBILE:**

**EMAIL:**



**PRELIMINARY ENTRY FORM 参赛信息表**2<sup>nd</sup> BEN WEIDER Diamond Cup

Bodybuilding, Classic Bodybuilding, Men's Fitness

Women's Fitness, Physique, Body Fitness, Bikini,

Lianyungang, 21,22,&amp;23 October 2014

Complete the Preliminary Entry Form and return it to the

Organizing Committee

AS SOON AS POSSIBLE BUT NO LATER THAN September 15<sup>th</sup> 2014**PLEASE PRINT CLEARLY**

FEDERATION NAME:协会名称 \_\_\_\_\_

FEDERATION CONTACT PERSON:协会联系人 \_\_\_\_\_

TEL:电话 \_\_\_\_\_ MOBILE:手机 \_\_\_\_\_

FAX:传真 \_\_\_\_\_ E-MAIL: \_\_\_\_\_

**Our Federation is planning to participate in above contests**

我们协会准备参加这次比赛

Please indicate "YES" or "NO".请选择是或不是 YES \_\_\_\_\_ NO \_\_\_\_\_

NUMBER OF DELEGATES:代表队人数 \_\_\_\_\_

NUMBER OF ATHLETES:运动员人数 \_\_\_\_\_

NUMBER OF EXTRA DELEGATES AND

SUPPORTERS:编外人员人数 \_\_\_\_\_

---

**THE PRELIMINARY ENTRY FORM INDICATING THE  
NUMBER OF YOUR TEAM MEMBERS MUST BE RETURNED  
NO LATER THAN SEPTEMBER 15th 2014 TO:**

在 2014 年 9 月 15 日前将此表发给 IFBB 和 CBBA

**CHINA BODYBUILDING AND FITNESS FEDERATION**

中国健美协会秘书长的联系方式

Mr. GuQiao – CBBA Gen. Secretary

Tel.:

Mobile :

Email: [cbba\\_cn@126.com](mailto:cbba_cn@126.com)

**COPY TO IFBB HEAD OFFICE 抄送 IFBB**

Email: [headquarters@ifbb.com](mailto:headquarters@ifbb.com)

Web: [www.ifbb.com](http://www.ifbb.com)

And

IFBB Technical Committee IFBB 技术委员会

Email: [wanda.tierney@ifbb-uk.com](mailto:wanda.tierney@ifbb-uk.com)

**FINAL ENTRY FORM 运动员报名表****2<sup>nd</sup> BEN WEIDER Diamond Cup**

Bodybuilding, Classic Bodybuilding, Men's Fitness

Women's Fitness – Physique - Body Fitness - Bikini,

Lianyungang Sports Center of October 21,22,&23, 2014

Complete the Final Entry Form and return it to the Organizing Committee and IFBB

Head Office with copy to Wanda Tierney

AS SOON AS POSSIBLE, BUT NO LATER THAN OCTOBER 5TH, 2014.

PLEASE PRINT CLEARLY

比赛表格要在 2014 年 10 月 5 日前交给组委会

COUNTRY 国籍	FEDERATION'S NAME 协会名称	PRESIDENT'S NAME 协会主席名称
CONTACT PERSON 联系人	TEL./MOBILE/FAX 电话/手机/传真	EMAIL 邮箱

	COMPETITOR'S NAME 运动员姓名	CATEGORY 级别	PASSPORT NR or IFBB ID NR 护照号或 IFBB 身份证
01			
02			
03			
04			
05			
06			
07			
08			
09			
10			

11			
12			
13			
14			
15			

	COMPETITOR'S NAME 运动员姓名	CATEGORY 级别	PASSPORT NR or IFBB ID NR 护照号或 IFBB 身 份证
16			
17			
18			
19			
20			
21			
22			
23			
24			
25			

**THE FINAL ENTRY FORM INDICATING THE ACTUAL NAMES  
OF YOUR TEAM MEMBERS MUST BE RETURNED NO LATER THAN  
OCTOBER 5th, 2014TO:**

必须在\*\*\*\*\*日之前发送给中国健美协会

**CHINA BODYBUILDING AND FITNESS FEDERATION**  
中国健美协会秘书长的联系方式

Mr. GuQiao – CBBA Gen. Secretary

Tel.:

Mobile :

Email: [cbba\\_cn@126.com](mailto:cbba_cn@126.com)

**COPY TO IFBB HEAD OFFICE 抄送 IFBB**

Email: [headquarters@ifbb.com](mailto:headquarters@ifbb.com)

Web: [www.ifbb.com](http://www.ifbb.com)

And IFBB Technical Committee

Email: [wanda.tierney@ifbb-uk.com](mailto:wanda.tierney@ifbb-uk.com)

**COMPETITOR INFORMATION FORM 运动员信息表格**

**2<sup>nd</sup> BEN WEIDER Diamond Cup**

Bodybuilding, Classic Bodybuilding, Men’s Fitness

Women’s Fitness – Physique - Body Fitness - Bikini,

Lianyungang Sports Center of October 21,22,&23, 2014

CATEGORY:级别.....

FIRST NAME:名..... FAMILY-NAME:姓.....

COUNTRY:国籍..... DATE OF BIRTH:出生日期.....

CONTEST BODYWEIGHT: 比赛体重..... HEIGHT: 身高.....

OFF-SEASON BODYWEIGHT: 非赛季体重.....

OCCUPATION EDUCATED: .....

CURRENTLY PERFORMED JOB: 工作单位.....

GYM (STUDIO, CLUB):俱乐部..... CITY: 城市.....

TRAINERS: .....

HOBBY:爱好.....

.....

NEXT CONTEST (PLANNED): 下一个准备的比赛.....

.....

**SPORT ACHIEVEMENTS: 主要成绩**

(According to National and International Sports Law, Sports Achievements are considered ONLY those gained in IFBB sanctioned events or events sanctioned by the national federations affiliated to IFBB)

.....  
.....  
.....

HOME ADDRESS: 家庭地址.....

CONTACT PHONE/FAX:联系电话传真.....

E-MAIL ADDRESS (in block letters):邮箱.....

YOUR PERSONAL WEBSITE ADDRESS: 个人网址.....

.....

Signature 签字

Please fill in this Entry Form for each competitor, take it with you to Greece and give it to the IFBB Press Commission representatives during the Registration (weigh-in) procedure

## LICENSE AGREEMENT

FOR THE PHOTOGRAPHERS

2<sup>nd</sup> BEN WEIDER Diamond Cup

Bodybuilding, Classic Bodybuilding, Men's Fitness

Women's Fitness – Physique - Body Fitness - Bikini,

Lianyungang Sports Center of October 21,22,&23, 2014

Concluded between:

1. IFBB (International Federation of Bodybuilding and Fitness) here in after referred to as „Licensor“ and

2.

Last name:姓	
First name:名	
Address:地址	
Phone/fax:电话传真	
E-mail address:邮箱	
Associated with (magazine, other media):杂志 或媒体名称	

Here in after referred to as “Licensee” as follows:下文称持执照者

### I. PREAMBLE 序文

The 2<sup>nd</sup> BEN WEIDER Diamond Cup is the sole property of the Licensor. The Licensor has the final authorities on press accreditation. Only media personnel approved by the Licensor shall be issued press accreditation and the ensuing rights to cover the event.

The Licensor has the right to grant the license. Based on this premises the parties agree as follows:

## II. LICENSE TYPE 执照类型

Licensor here with grants licensee a non exclusive licence for the production and sale of photographs taken at the 2<sup>nd</sup> BEN WEIDER Diamond Cup Bodybuilding, Classic Bodybuilding, Men’s Physique Women’s Fitness – Physique - Body Fitness - Bikini, Lianyungang Sports Center, China for further publication in sport media only.

## III. ROYALTIES 稿酬

For the license under this contract, licensee shall pay licensor a lump sum of EUR 100,00. This fee is due upon the signature of this contract.

All value added taxes, sales taxes and indirect taxes that have to be paid for the royalties shall be borne by the licensee. If necessary, these taxes, when being collected from the licensor, shall be paid by the licensee in the name of the licensor.

## IV. JURISDICTION 司法权

Place of performance is Madrid. For all controversies under this agreement the jurisdiction of

Madrid/Spain is agreed upon.

Date: 日期 .....

Licensor (IFBB) 发照单位

Licensee

Please fill this Form and send to the Organizing Committee not later than September 30st, 2014? 在\*\*\*\*\*日期前交给组委会

Read **Fitness Style** digital magazine NOW on-line for FREE!

Click the image below.

